



## Emergency Foot Switch RLN4836



Professional Radio

Accessories

## **DESCRIPTION**

In case of emergency situations, the user of a mobile radio may need to secretly communicate to the base station. The RLN4836 Emergency Foot Switch provides the means to quickly and secretly trigger the Professional Radio to send an emergency alert.

## **INSTALLATION**

Carefully select the installation location for the RLN4836 Emergency Foot Switch. Plan the location so that once installed, the foot switch is readily accessible to the user, but will not be stepped on accidentally while performing normal vehicle operation. Refer to Figure 1 for foot switch detail and parts identification.

### **Preparing the Foot Switch**

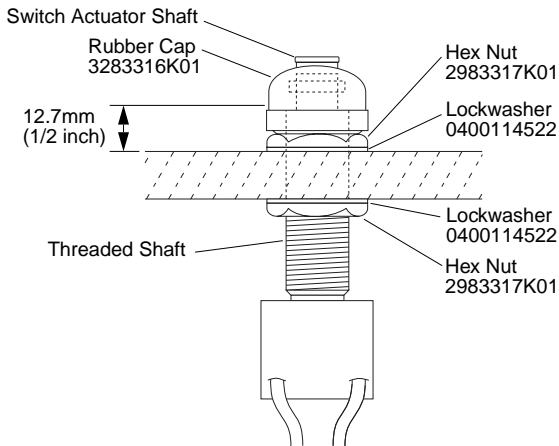
The foot switch is assembled with two hex nuts and a rubber cap. Disassemble the foot switch as follows:

1. Unscrew the rubber cap in a counterclockwise direction until it is loose on the threaded shaft.
2. Pull the rubber cap away from the threaded shaft and off the switch actuator shaft.
3. Remove one hex nut from the threaded shaft.

## **Installing the Foot Switch**

Once an installation location has been decided, perform the following steps:

1. Drill a 16.5mm (41/64 inch) hole through the mounting surface.
2. Place one lockwasher (supplied in plastic bag) on the foot switch threaded shaft.
3. Insert the threaded shaft up through the mounting surface.
4. Adjust the hex nut until the exposed threaded shaft is 12.7 mm (1/2 inch) above the top of the mounting surface.
5. Place one lockwasher (supplied in plastic bag) on the threaded shaft.
6. Screw the second hex nut onto the threaded shaft, and tighten it to secure the foot switch in the hole.
7. Screw the metal portion of the rubber cap onto the threaded shaft and pop the boot over the switch actuator shaft.
8. Screw the rubber cap down to secure it.

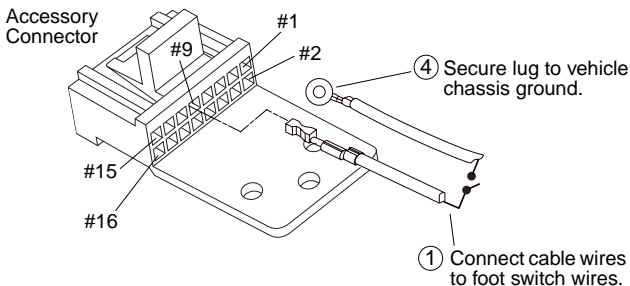


*Figure 1. Emergency Foot Switch Detail*

## **Making Final Connections**

The emergency foot switch includes a cable. One end of the cable has two exposed wires, the other end has two wires with a lug and a terminal pin attached. Refer to Figure 2, and make connections as follows:

1. Connect the two wires from the foot switch to the cable (end with exposed wires). Polarity is not important.



*Figure 2. Making Final Connections*

2. Route and secure the cable.
3. Insert the cable wire with terminal pin into the #9 socket of the accessory connector.
4. Secure the cable wire with connector lug to vehicle chassis ground.

## **OPERATION**

Refer to your radio's user guide for information on *Sending An Emergency Alert*. Send an emergency alert by pressing the emergency foot switch. Cancel the emergency alert by pressing the PTT or by pressing another button preprogrammed by your dealer. The only difference in the operation of emergency alert is that, unlike other ways of initiating the alert, the emergency foot switch will power up a radio that is off.

© 1999 by Motorola, Inc.  
8000 W. Sunrise Blvd., Ft. Lauderdale, FL 33322

Ⓜ, Motorola, and Professional Radio are trademarks of Motorola, Inc.  
Printed in U.S.A. 7/99. All Rights Reserved.



68P81093C44-O