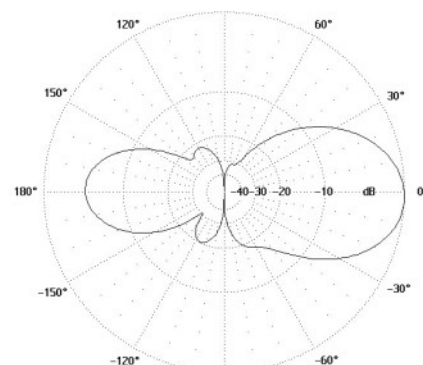
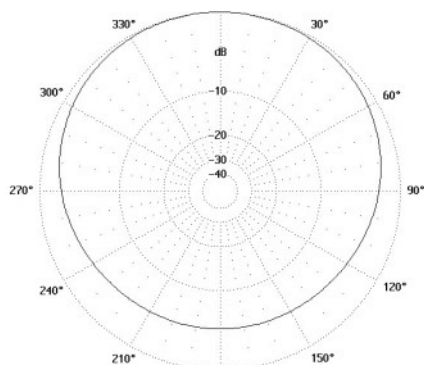
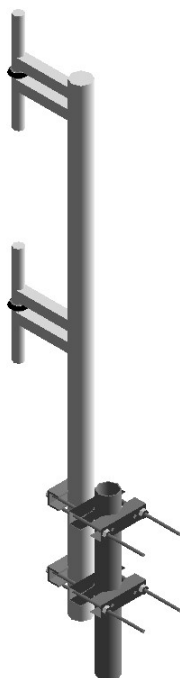


MEDIUM GAIN ANTENNA AV1915



Type	AV1915
Frequency	350...470 MHz (AV1915-H) 300...350 MHz (AV1915-A) 280...320 MHz (AV1915-300)
Bandwidth	120 MHz (AV1915-H) 50 MHz (AV1915-A) 40 MHz (AV1915-300)
Impedance	50 Ω DC grounded
VSWR	1,5 max
Polarisation	Vertical
Gain	7 dBi
E-plane 3 dB beamwidth	30°
H-plane 3 dB beamwidth	180°
Electrical downtilt	None
Front to back ratio	6 dB
Max. Continuous power	0,5 kW
RF-connector	N or 7/16 female
Operational windspeed	40 m/s (default)
Survival windspeed	55 m/s (default)
Wind area	0,16 m ²
Dimensions (H x W x D) (\varnothing x H)	1450 x 200 x 60 mm
Weight	5 kg
Mounting diameter	\varnothing 30...115 mm pipe
Materials	Aluminium Glass reinforced polycarbonate/PE
Options	Different dipole variations for example double unit antenna for separate Rx and Tx dipole segments. Special frequency ranges available on request.